

Map Book 7, Map No. 692

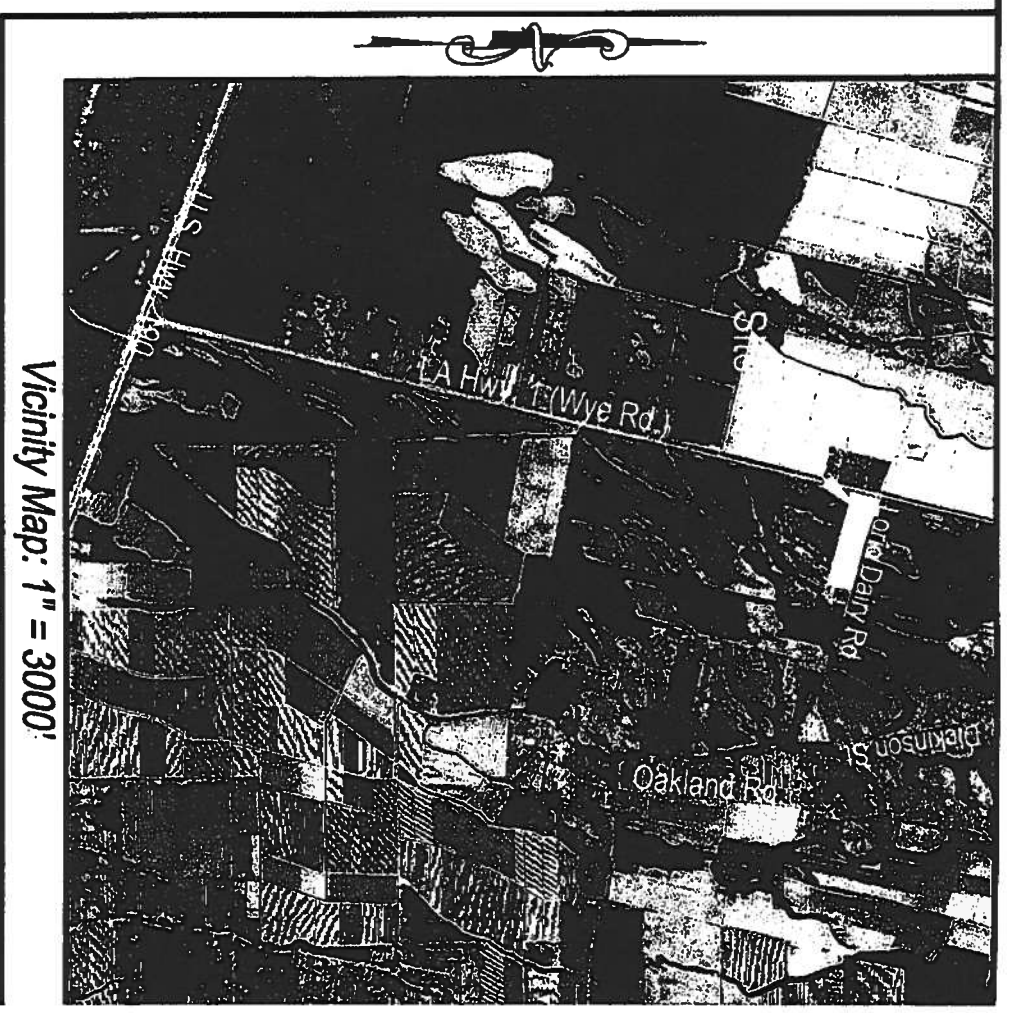
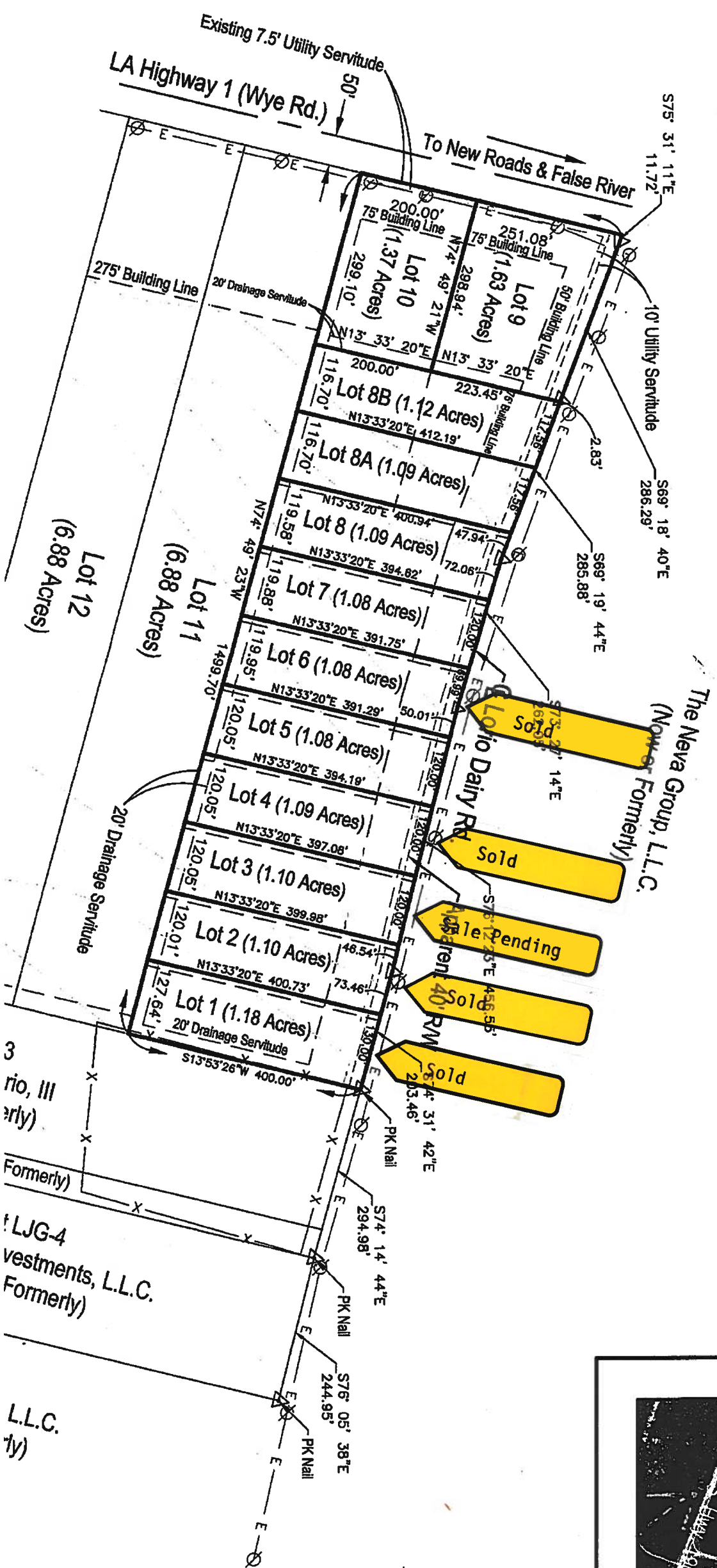
CB BK 626 NO 015  
RECEIVED & FILED

2016 MAY 26 PM 3:29

LANEL, SWICHLER LANSRY  
CLERK OF COURT & RECORDER  
PARISH OF POINTE COUPEE

. dated  
E.G.  
Entry  
d by  
196 in  
rinte  
d in Map  
ce A.  
121 in  
J.

- Legend:**
- Found 1/2" Iron Pipe or as shown
  - Set 1/2" Iron Pipe
  - △ PK Nail
  - ⊗ Existing Powerpole
  - Existing Fence Line
  - Overhead Electric Line
  - Existing Utility Servitude (As shown)
  - Building Lines (As shown)
  - Drainage Servitude (As shown)
  - Original Lots Lines (As per map dated April 29, 2014)
- Indicates Approximate Flood Zone Boundary  
Digitized from FEMA maps (See Flood Note)



Vicinity Map: 1" = 3000'



Formerly)  
L.J.G-4  
Investments, L.L.C.  
Formerly)  
L.L.C.  
(Formerly)